

# **CENTAUR**



## **HOUND/DOG HOT WALKER**

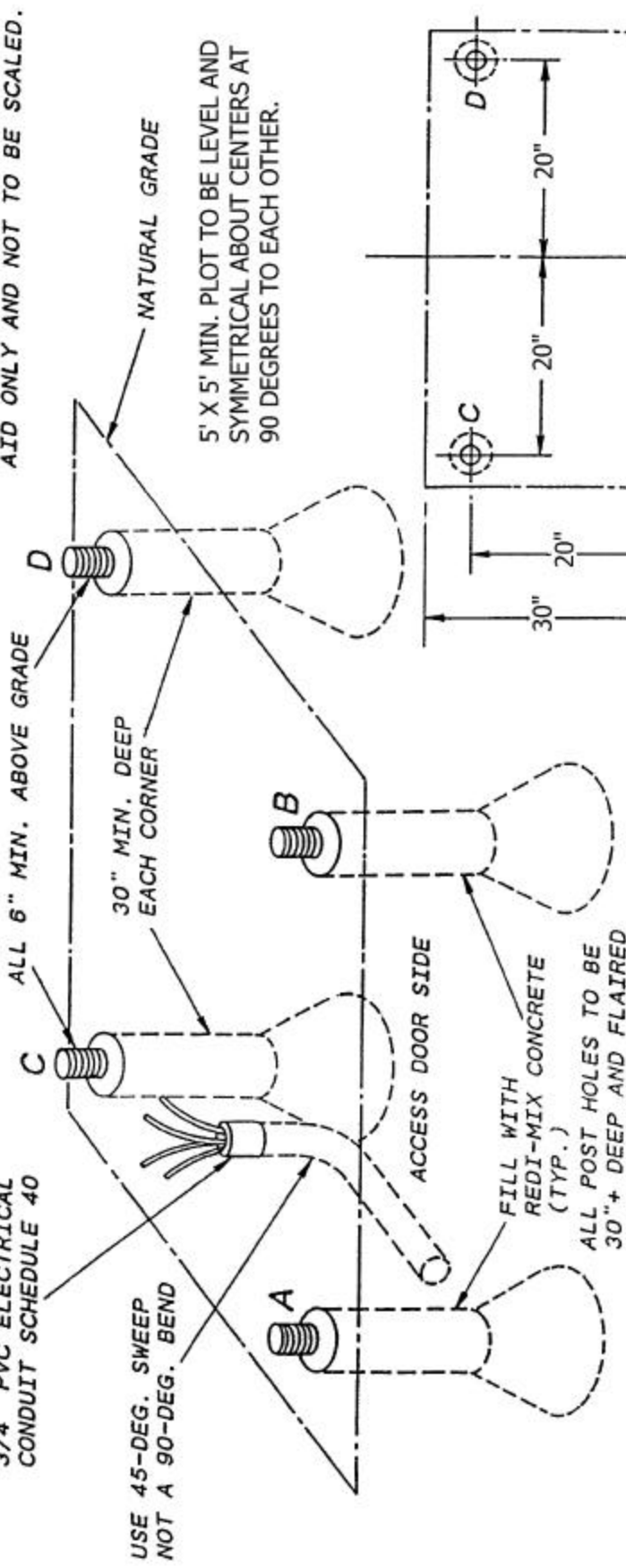
# **Concrete & Electrical Installation Diagrams**

**5761 RIDGEVIEW AVENUE  
P.O. BOX 446  
MIRA LOMA, CALIFORNIA 91752  
(909) 685-7337 (909) 685-0341 FAX  
1-800-962-8050  
[www.hotwalkers.com](http://www.hotwalkers.com)  
E-Mail: [centaur@hotwalkers.com](mailto:centaur@hotwalkers.com)**

**POST HOLE INSTALLATION FOR  
ALL CENTAUR HOUND/DOG WALKER MODELS**

STUB UP 6" ABOVE  
NATURAL GRADE -  
3/4" PVC ELECTRICAL  
CONDUIT SCHEDULE 40

ANGULAR PROJECTION IS VISUAL  
AID ONLY AND NOT TO BE SCALED.



USE 45-DEG. SWEEP  
NOT A 90-DEG. BEND

NATURAL GRADE

5' X 5' MIN. PLOT TO BE LEVEL AND  
SYMMETRICAL ABOUT CENTERS AT  
90 DEGREES TO EACH OTHER.

B

30" MIN. DEEP  
EACH CORNER

C

A

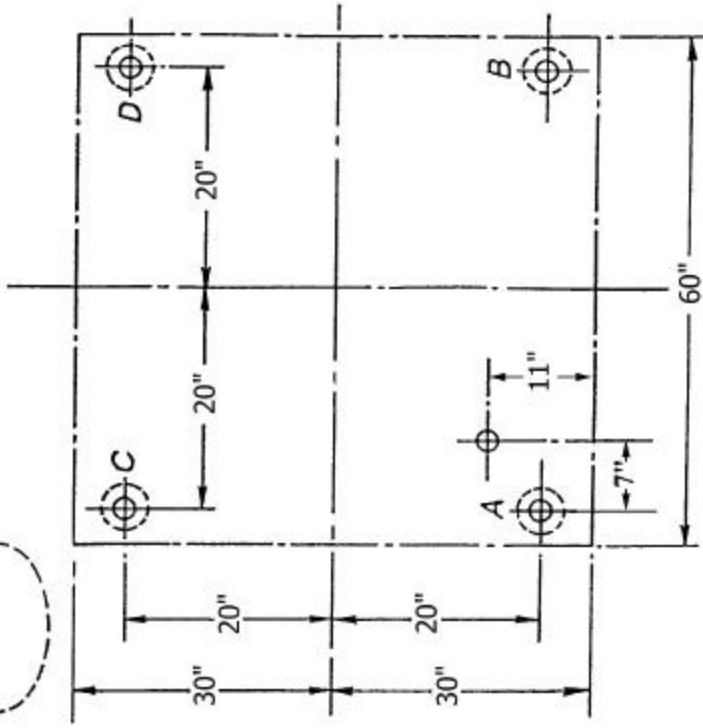
D

ALL 6" MIN. ABOVE GRADE

ACCESS DOOR SIDE

FILL WITH  
REDI-MIX CONCRETE  
(TYP.)

ALL POST HOLES TO BE  
30"+ DEEP AND FLAIED

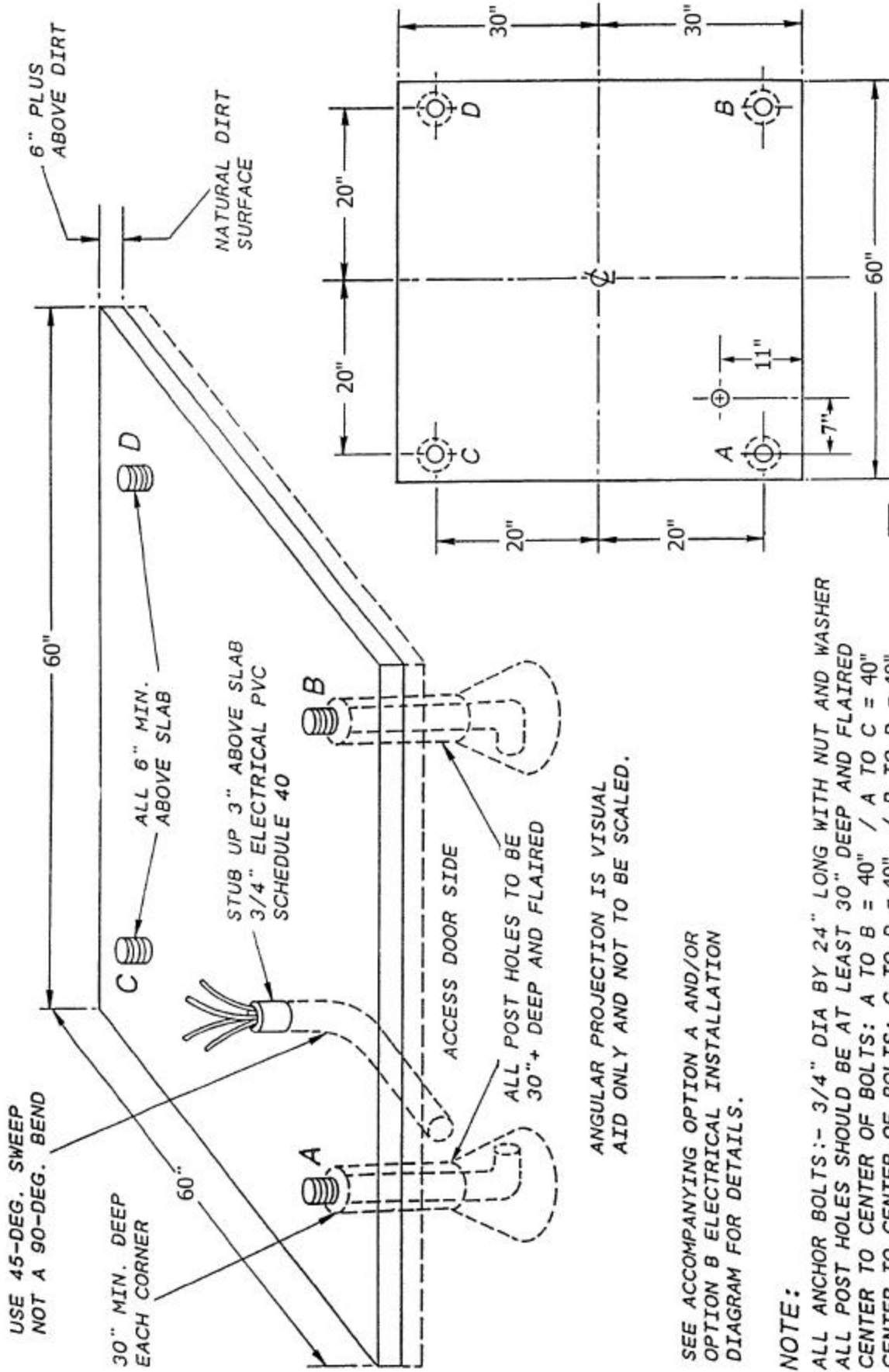


SEE ACCOMPANYING OPTION A AND/OR  
OPTION B ELECTRICAL INSTALLATION  
DIAGRAM FOR DETAILS.

**NOTE:**

ALL ANCHOR BOLTS: 3/4" DIAMETER BY 24" LONG WITH NUT AND WASHER  
ALL POST HOLES SHOULD BE AT LEAST 30" DEEP AND FLAIED  
CENTER TO CENTER OF BOLTS: A TO B = 40" / A TO C = 40"  
CENTER TO CENTER OF BOLTS: C TO D = 40" / B TO D = 40"  
CENTER TO CENTER DIAGONALLY OF BOLTS A TO D AND B TO C = 56 3/4"  
ACCESS DOOR SIDE - A TO B

# CONCRETE PAD INSTALLATION FOR ALL CENTAUR HOUND/DOG WALKERS



ANGULAR PROJECTION IS VISUAL AID ONLY AND NOT TO BE SCALED.

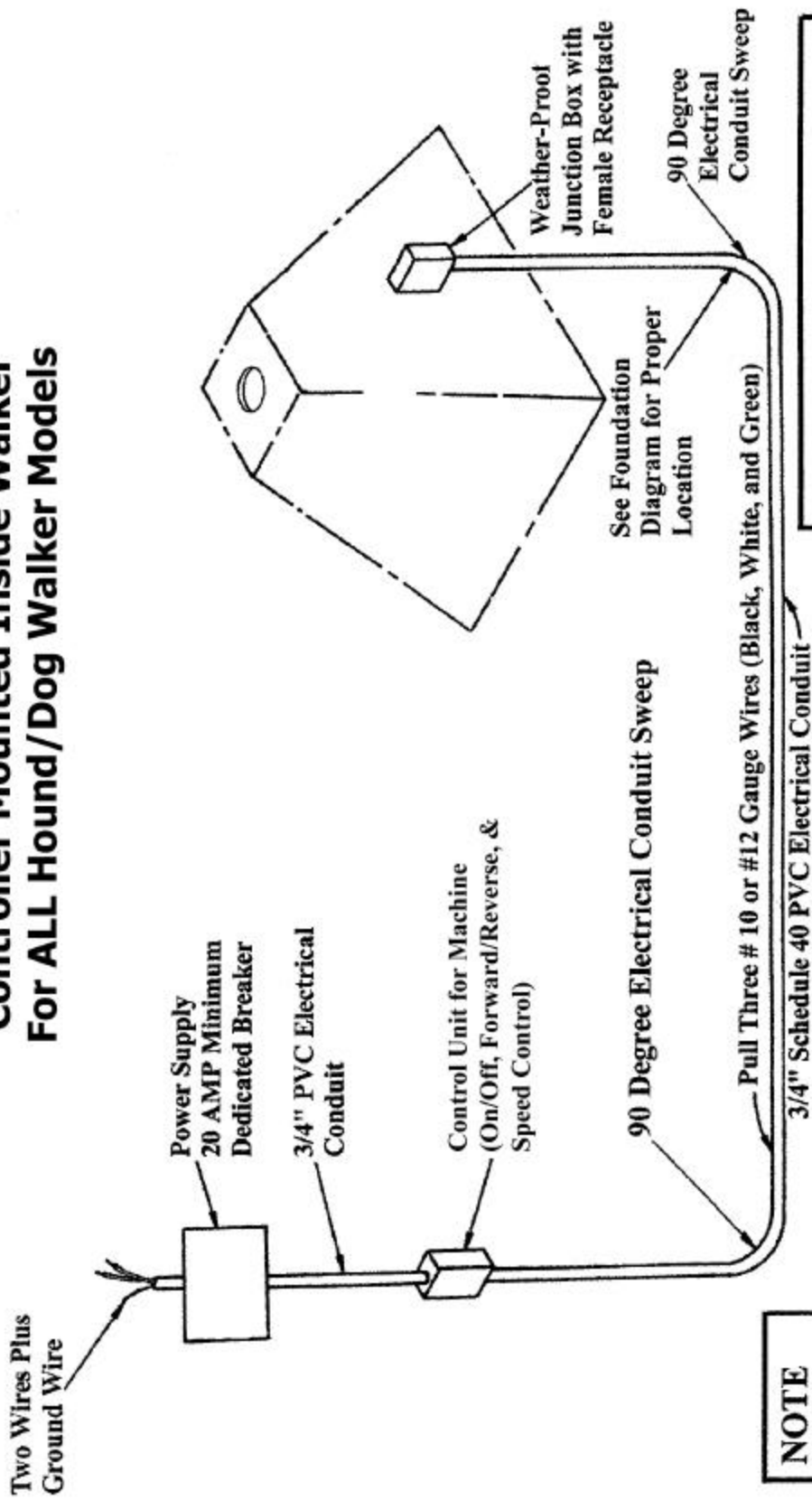
SEE ACCOMPANYING OPTION A AND/OR OPTION B ELECTRICAL INSTALLATION DIAGRAM FOR DETAILS.

**NOTE:**

ALL ANCHOR BOLTS:- 3/4" DIA BY 24" LONG WITH NUT AND WASHER  
 ALL POST HOLES SHOULD BE AT LEAST 30" DEEP AND FLAIRED  
 CENTER TO CENTER OF BOLTS: A TO B = 40" / A TO C = 40"  
 CENTER TO CENTER OF BOLTS: C TO D = 40" / B TO D = 40"  
 CENTER TO CENTER DIAGONALLY OF BOLTS A TO D AND B TO C = 56 3/4"  
 ACCESS DOOR SIDE - A TO B

5' X 5' MIN. PLOT TO BE LEVEL AND SYMMETRICAL ABOUT CENTERS AT 90 DEGREES TO EACH OTHER

# Centaur Electrical Installation Option A 110/120 Volt Controller Mounted Inside Walker For ALL Hound/Dog Walker Models



**NOTE**

Use #8 Wire for Runs Exceeding 150 Feet (46 M).  
 Maximum Run of Electrical Wire to be 250 Feet (76.2 M).  
 Maximum Run to be 250 Feet from 20 AMP Dedicated Breaker.  
 Minimum Depth of 3/4" PVC Schedule 40 Electrical Conduit to be  
 TWO FEET DEEP WHERE DOGS/HOUNDS WALK.

Electrical Installation by Licensed Contractor  
 In Compliance with State and Local Building  
 Code is Standard Procedure Recommended by  
 Centaur Horse Walkers, Inc.